

SAVVAS **math** Screener & Diagnostic Assessments

Click Path



Assigning The Screener



Universal
Screener

The Screener is a short assessment of prerequisite skills from the students' previous grade level. Please reference the MSDA User Guide in the Getting Started folder for more information and test administration support.

In **EasyBridge**, confirm enVision Mathematics products have been added to the class.

Check both Current & Future Classes tabs for your classes

Add Products You must add a product to a class in EasyBridge to see that class and roster in Realize

Navigate to Realize and open enVision Mathematics. From the **table of contents**, select **Mathematics Screener and Diagnostic Assessments**.

Select the **Screener Assessment**. Select the **Leveled Screener Assessment** and click **assign**. You can also choose to create groups of students and assign the Screener in English or Spanish.

Click here to learn about creating groups.

Complete the Create Assignment screen with Start date, Due date, Assign to, and click **assign**.

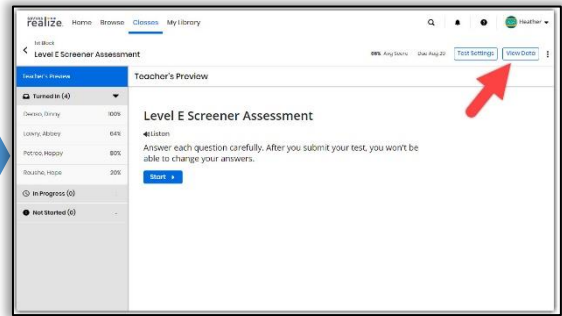
Students may now complete the Screener. **Student Video Guide** available at MySavvasTraining.com.

Assigning The Multistage Adaptive Diagnostic

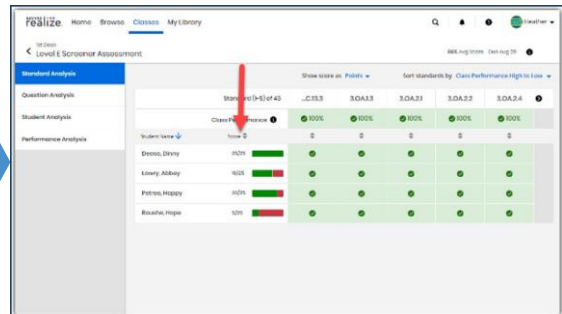


Based on the results of the Screener, you decide which Diagnostic Assessment is appropriate for each student. Please reference the MSDA User Guide in the Getting Started folder for more information and support.

Assigning the Diagnostic begins by viewing your student's Screener scores. Open the Screener and select **View Data**.



Under **Class Performance**, click **Score** twice to sort by Screener score with the lowest score at the top. We are looking at a Grade 4 class who took the Level E Screener.



Go to Part 4 in the **User Guide** to find the cut score. You will use this score to determine which Diagnostic to assign to your students. In this example for 4th graders, we would use the score of 40% or 10 out of 25.

Diagnostic Recommendation Table

Grade & Screener Levels	Cut Score	Recommended Diagnostic Assessment	
		Less Than Cut Score	Greater Than or Equal to Cut Score
Kindergarten Level A	--	All students should be assigned the Level A Diagnostic Assessment.	
Grade 1 Level B	50% (10 out of 20)	Level A Diagnostic Assessment	Level B Diagnostic Assessment
Grade 2 Level C	45% (10 out of 22)	Level B Diagnostic Assessment	Level C Diagnostic Assessment
Grades 3-5 Levels D-F	40% (10 out of 25)	Prior-grade level Diagnostic	On-grade level Diagnostic (matches the Screener level)
Grades 6-8 Levels G-I	35% (11 out of 30)	Prior-grade level Diagnostic	On-grade level Diagnostic (matches the Screener level)

In our Level E Screener example, students scoring below 40%, or 10 out of 25, are recommended to take the Level D Diagnostic, and those scoring at or above 40%, or 10 out of 25, are recommended to take the Level E Diagnostic.

Diagnostic Recommendation Table

Grade & Screener Levels	Cut Score	Recommended Diagnostic Assessment	
		Less Than Cut Score	Greater Than or Equal to Cut Score
Kindergarten Level A	--	All students should be assigned the Level A Diagnostic Assessment.	
Grade 1 Level B	50% (10 out of 20)	Level A Diagnostic Assessment	Level B Diagnostic Assessment
Grade 2 Level C	45% (10 out of 22)	Level B Diagnostic Assessment	Level C Diagnostic Assessment
Grades 3-5 Levels D-F	40% (10 out of 25)	Prior-grade level Diagnostic	On-grade level Diagnostic (matches the Screener level)
Grades 6-8 Levels G-I	35% (11 out of 30)	Prior-grade level Diagnostic	On-grade level Diagnostic (matches the Screener level)

Assigning The Multistage Adaptive Diagnostic

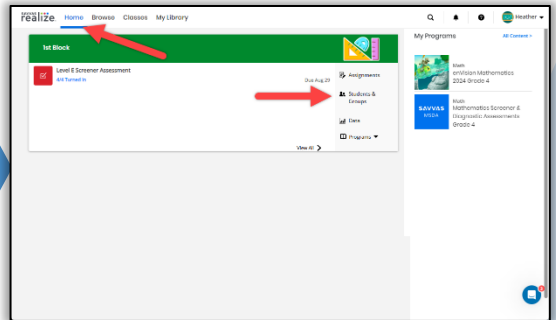


Based on the results of the Screener, you decide which Diagnostic Assessment is appropriate for each student. Please reference the MSDA User Guide in the Getting Started folder for more information and support.

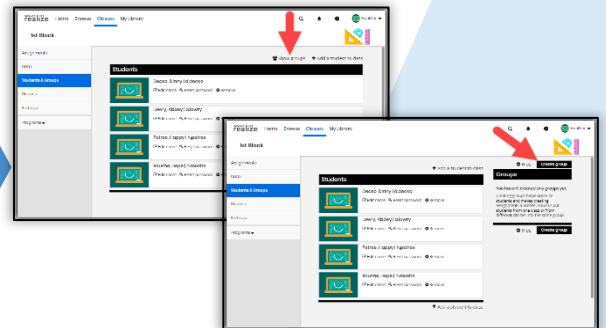
Make a mental or paper note of which students are recommended to take the prior- or on-grade level Diagnostic. *You may have other information to include in your judgment, such as cumulative folder or situational data.*

Class Performance	Level 5	3.OA.1	3.OA.2	3.OA.3	3.OA.4
Student Name	100%	100%	100%	100%	100%
Dennis, Devin	100%	0	0	0	0
Lobby, Abby	100%	0	0	0	0
Patton, Hippy	100%	0	0	0	0
Rouche, Hippi	100%	0	0	0	0

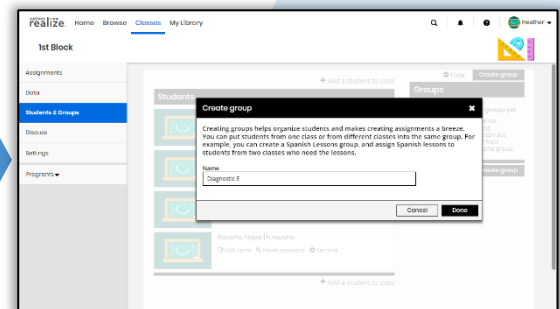
Return to the **Home** tab and select **Students & Groups**



Click **Show Groups**.
Click **Create Group**.



Create a group for your above-grade and prior-grade level Diagnostic Assessment student groups.

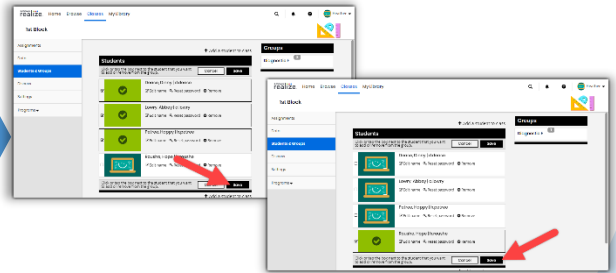


Assigning The Multistage Adaptive Diagnostic

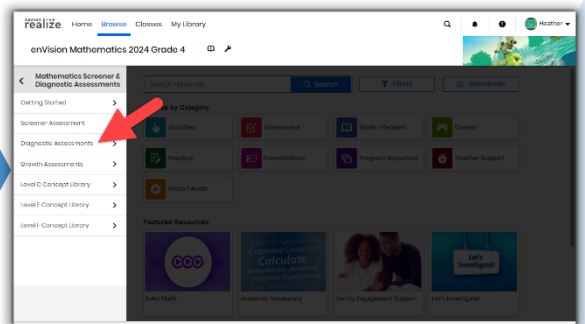


Based on the results of the Screener, you decide which Diagnostic Assessment is appropriate for each student. Please reference the User Guide for more information and test administration support.

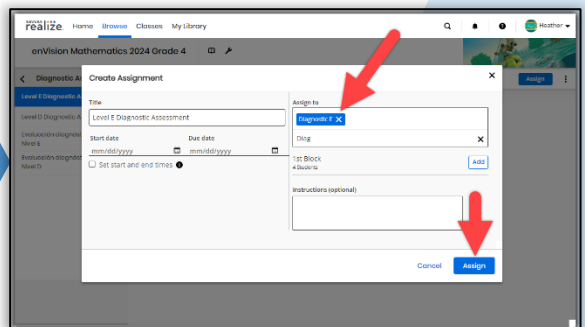
Refer to your mental or paper note of student groups based on the cut score. Select the students for the appropriate group and click save. Repeat this for both groups.



Return to the **Mathematics Screener & Diagnostic** tab in the Table of Contents and choose the **Diagnostic**.

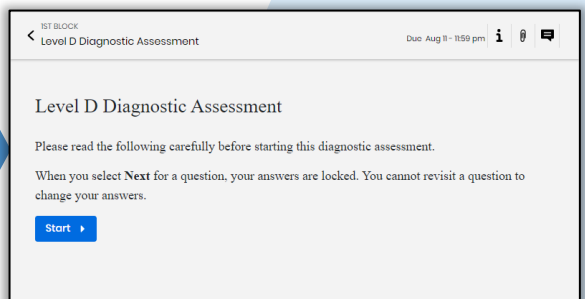


Assign the on-grade level and prior-grade level Diagnostic Assessment to the appropriate group of students.



Success!
Your students may now begin the Diagnostic Assessment. Refer to the **MSDA User Guide** for guidance on administering the Diagnostic.

Student Video Guide available at [MySavvasTraining.com](https://www.mysavvas.com)

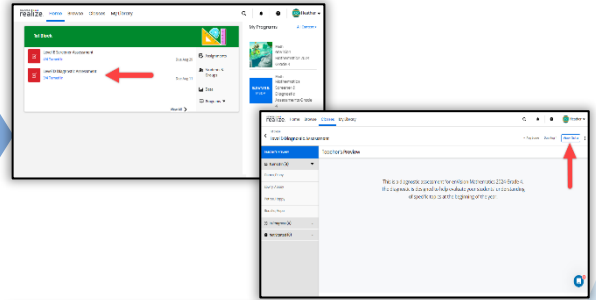


Leveraging Instructional Recommendations

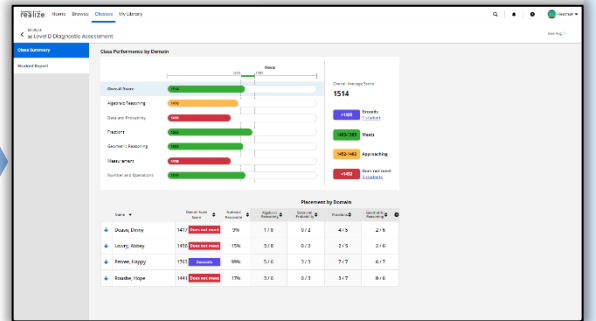


For more information about how to navigate these reports, see the [Class Summary for Diagnostic Assessments](#) and [Student Report for Diagnostic Assessments](#) help documents.

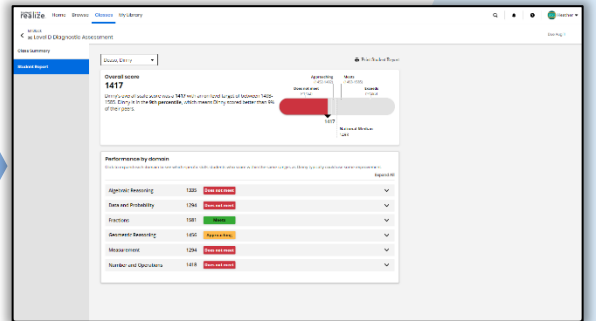
Once students have completed the Diagnostic, you are equipped with easy-to-read data and targeted resources to accelerate student understanding.



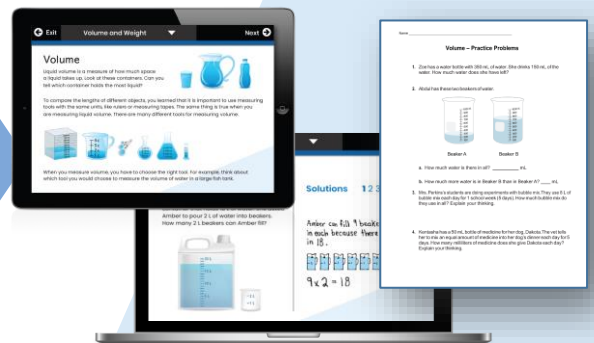
Use the **Class Summary** reports to see a detailed view of your class by mathematical Domain. Take note of the domains that show strengths and opportunities for improvement for the whole class and allow this data to guide your lesson planning.



The **Student Summary** report offers each student's overall summary as well as Domain-specific information. Expand the Domains to view Relative Strengths, Areas for Improvement, and Stretch Goals, along with standards and links to instructional resources.



Interactive web pages, videos, and printable resources can be used throughout the school year for Topic planning, student grouping, and differentiation. These resources are assignable directly within Realize.



Learn more at [MySavvasTraining.com](https://www.MySavvasTraining.com).